



JOCAR TRANSMISIONES S.L.

c/Lezeaga, 4 48002 Bilbao

Tlf 94 427 53 40 Fax 94 427 54 93

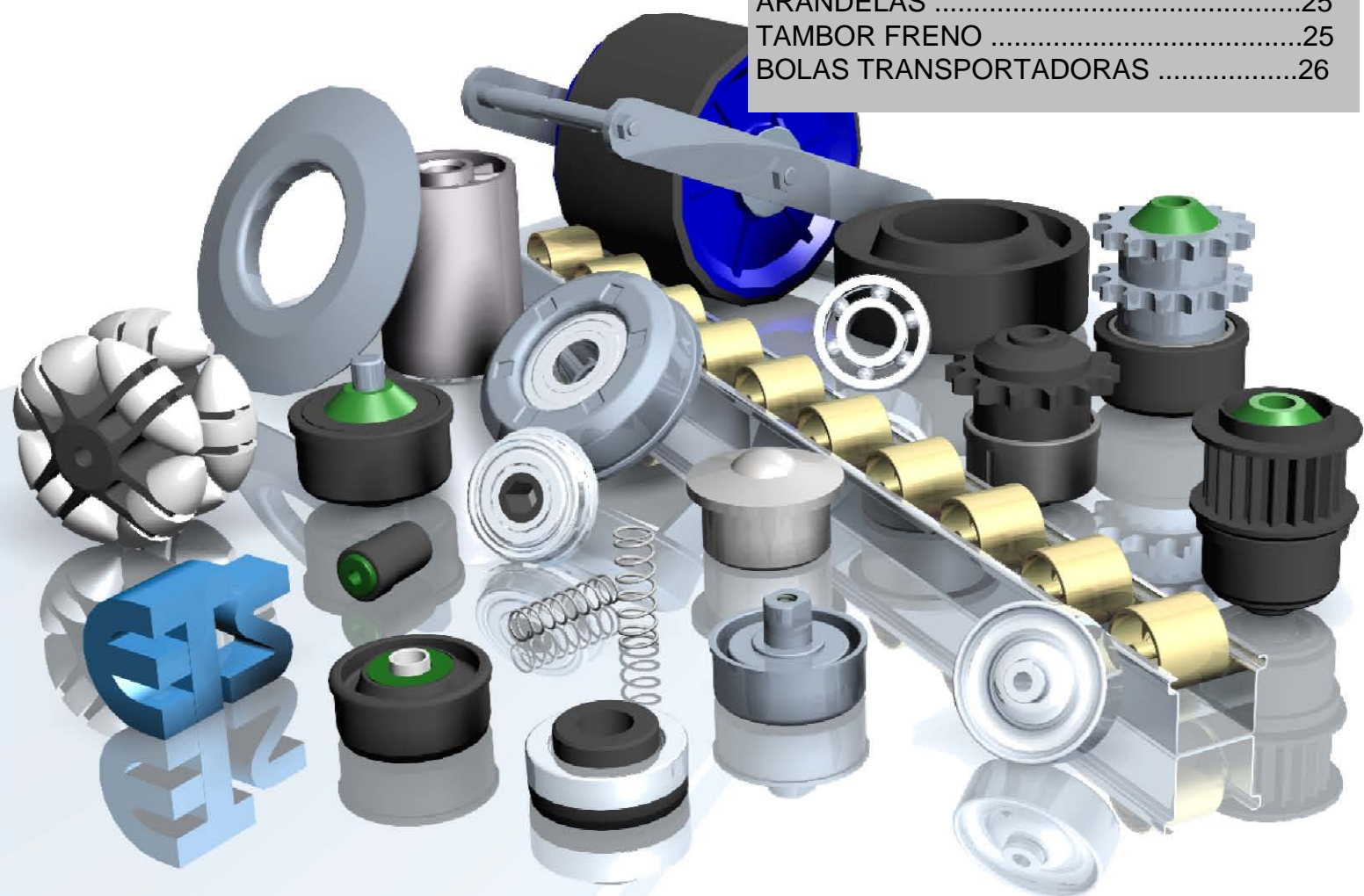
www.jocartransmisiones.com

e-mail: jocar@jocartransmisiones.com

INDICE de componentes ETS

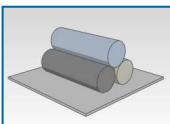


| | |
|------------------------------------|----|
| CABEZALES TERMOPLÁSTICOS..... | 4 |
| CABEZALES METÁLICOS EMBUTIDOS..... | 7 |
| CAZOLETAS METÁLICAS SOLDADAS | 10 |
| PIÑONES TERMOPLÁSTICOS | 11 |
| PIÑONES METÁLICOS EMBUTIDOS | 13 |
| PIÑONES METÁLICOS SOLDADOS..... | 16 |
| POLEAS TERMOPLÁSTICAS..... | 18 |
| CIERRE LABERÍNTICO | 19 |
| ALETAS GUÍA | 19 |
| GOMAS..... | 20 |
| CONOS | 21 |
| ROLDANAS..... | 22 |
| MINICARRIL | 23 |
| RODILLO AUTOLUBRICADO..... | 24 |
| POLEA GUÍA | 24 |
| MUELLES..... | 24 |
| ARANDELAS | 25 |
| TAMBOR FRENO | 25 |
| BOLAS TRANSPORTADORAS | 26 |



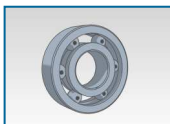
CABEZALES TERMOPLÁSTICOS

| SERIE | | TUBO (mm) | EJE (mm) | CARGA (daN) |
|----------------|--|-----------|------------|-------------|
| EM-50 EM-51 | | 12x1 | 4 | 4 |
| | | 16x1 | 5 – 6 | 4 |
| | | 20x1 | 6 | 5 |
| | | 20x1.5 | 6 – 8 | 5 |
| | | 30x1.5 | 6 – 8 – 10 | 7 |
| | | 30x1.8 | 6 – 8 – 10 | 7 |
| | | 40x1.5 | 8 – 10 | 7 |
| | | 40x2.3 | 8 – 10 | 7 |

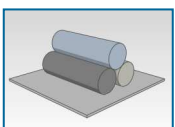


POLIPROPILENO
AISI-303 (PARA TUBO Ø12)

HILERA DE BOLAS SIMPLE
- EM-50 ACERO AL CARBONO
- EM-51 ACERO INOX. AISI-316

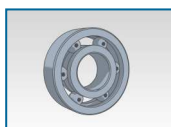


| SERIE | | TUBO (mm) | EJE (mm) | CARGA (daN) |
|------------------|--|-----------|--------------------|-------------|
| EM-101 EM-103 | | 50x1.5 | 8 – 10 – 12 – SW11 | 12 |
| | | 50x2.8 | 8 – 10 – 12 – SW11 | 12 |
| | | 60x1.5 | 8 – 10 – 12 – SW11 | 12 |
| | | 60x2 | 8 – 10 – 12 – SW11 | 12 |
| | | 63x3 | 8 – 10 – 12 – SW11 | 12 |
| | | 80x2 | 8 – 10 – 12 – SW11 | 12 |




POLIPROPILENO

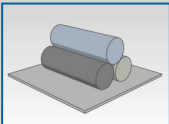
HILERA DE BOLAS DOBLE
- EM-101 ACERO AL CARBONO
- EM-103 ACERO INOX. AISI-316





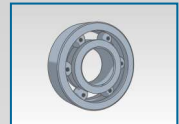
CABEZALES TERMOPLÁSTICOS


| SERIE | | TUBO (mm) | EJE (mm) | CARGA (daN) |
|--------|---|-----------|------------------|-------------|
| EM-250 |  | 30x1.5 | 8 – 10 – 12 – 15 | 80 |
| | | 40x1.5 | 8 – 10 – 12 – 15 | 80 |

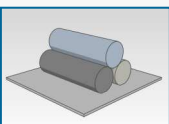


POLIPROPILENO

DIN625 61802-2RS1

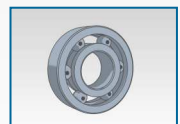


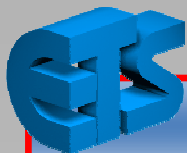
| SERIE | | TUBO (mm) | EJE (mm) | CARGA (daN) |
|--------|---|-----------|--------------|-------------|
| EM-300 |  | 60x2 | 15 – 17 – 20 | 120 |
| | | 80x2 | 15 – 17 – 20 | 120 |



POLIPROPILENO

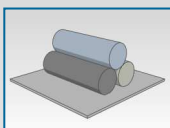
DIN625 6204-2RS1





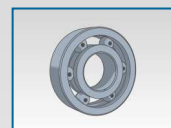
GABEZALES TERMOPLÁSTICOS

| SERIE | | TUBO (mm) | EJE (mm) | CARGA (daN) |
|---------------------|--|-----------|--|-------------|
| EM-310 EM-310-AN | | 50x1.5 | 10 – 12 – 14 – 15 – SW11 | 120 |
| | | 50.8x1.5 | 10 – 12 – 14 – 15 – SW11 | 120 |
| | | 50x2.8 | 10 – 12 – 14 – 15 – SW11 | 120 |
| | | 60x1.5 | 10 – 12 – 14 – 15 – SW11 | 120 |
| | | 60x2 | 10 – 12 – 14 – 15 – SW11 | 120 |
| | | 63x3 | 10 – 12 – 14 – 15 – SW11 | 120 |
| | | 80x2 | 10 – 12 – 14 – 15 – SW11 | 120 |
| | | | TAMAÑOS DISPONIBLES EN VERSIÓN ANTIESTÁTICA (AN) | |

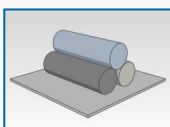


POLIPROPILENO

DIN625 6202-2RS1

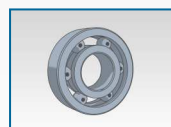


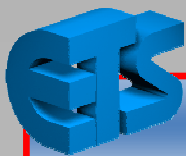
| SERIE | | TUBO (mm) | EJE (mm) | CARGA (daN) |
|--------|--|-----------|----------|-------------|
| EM-350 | | 50x1.5 | 12 | 50 |
| | | 60x1.5 | 12 | 50 |
| | | 60x2 | 12 | 50 |
| | | 63x3 | 12 | 50 |
| | | 80x2 | 12 | 50 |



POLIPROPILENO

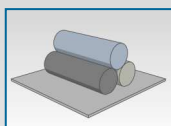
DIN625 6002-2RS1





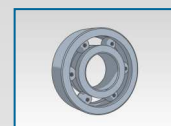
CABEZALES METÁLICOS EMBUTIDOS

| SERIE | | TUBO (mm) | EJE (mm) | CARGA (daN) |
|----------|--|-----------|--------------------|-------------|
| EM-230-K | | 18x1 | 6 | 12 |
| | | 25x1.5 | 6 | 12 |
| | | 30x1.2 | 8 – 10 | 30 |
| | | 30x1.5 | 8 – 10 | 30 |
| | | 40x1.5 | 8 – 10 – 12 – SW11 | 80 |
| | | 40x2 | 8 – 10 – 12 – SW11 | 80 |
| | | 48x1.5 | 8 – 10 – 12 – SW11 | 80 |
| | | 50x1.5 | 8 – 10 – 12 – SW11 | 80 |
| | | 50x2 | 8 – 10 – 12 – SW11 | 80 |
| | | 60x1.5 | 8 – 10 – 12 – SW11 | 80 |
| | | 60x2 | 8 – 10 – 12 – SW11 | 80 |
| | | 80x2 | 8 – 10 – 12 – SW11 | 80 |

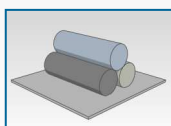


CAZOLETA: ACERO AP-02 CINCADO
CASQUILLO: POLIPROPILENO

RODAMIENTO ESTAMPADO

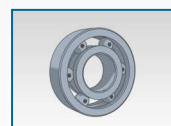


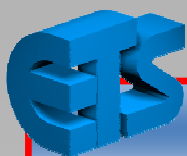
| SERIE | | TUBO (mm) | EJE (mm) | CARGA (daN) |
|-----------|--|-----------|--------------------|-------------|
| EM-240-KI | | 50x1.5 | 8 – 10 – 12 – SW11 | 120 |
| | | 50x2 | 8 – 10 – 12 – SW11 | 120 |
| | | 50x3 | 8 – 10 – 12 – SW11 | 120 |
| | | 60x1.5 | 8 – 10 – 12 – SW11 | 120 |
| | | 60x2 | 8 – 10 – 12 – SW11 | 120 |
| | | 80x2 | 8 – 10 – 12 – SW11 | 120 |



CAZOLETA: ACERO AP-02 CINCADO
CASQUILLO: POLIPROPILENO

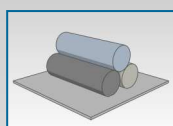
RODAMIENTO ESTAMPADO





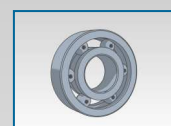
CABEZALES METÁLICOS EMBUTIDOS

| SERIE | | TUBO (mm) | EJE (mm) | CARGA (daN) |
|-----------|--|-----------|---------------------|-------------|
| EM-240-K2 | | 50x1.5 | 12 – 14 – 15 – SW11 | 120 |
| | | 50x2 | 12 – 14 – 15 – SW11 | 120 |
| | | 60x1.5 | 12 – 14 – 15 – SW11 | 120 |
| | | 60x2 | 12 – 14 – 15 – SW11 | 120 |
| | | 80x2 | 12 – 14 – 15 – SW11 | 120 |

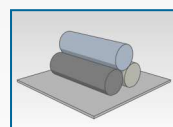


CAZOLETA: ACERO AP-02 CINCADO
CASQUILLO: ACERO TEMPLADO

RODAMIENTO ESTAMPADO



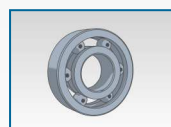
| SERIE | | TUBO (mm) | EJE (mm) | CARGA (daN) |
|-----------|--|-----------|---|-------------|
| EM-260-CS | | 50x1.5 | A15 / PL12x8 / RIM8x15 | 100 |
| | | 60x2 | A15 / PL12x8 / RIM8x15 | 100 |
| | | 80x2 | A20 / PL14x10 / RIM8x15 A20 / PL14x10 / RIM10x15 | 170 |
| | | 89x3 | A20 / PL14x10 / RIM8x15 A20 / PL14x10 / RIM10x15 | 170 |

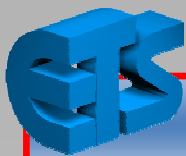


ACERO AP-02 CINCADO


DIN625 6202-2RS1 (TUBO Ø50 Y Ø60)

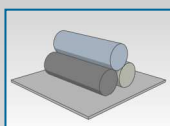
DIN625 6204-2RS1 (TUBO Ø80 Y Ø89)





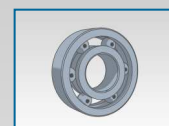
CABEZALES METÁLICOS EMBUTIDOS


| SERIE | TUBO (mm) | EJE (mm) | CARGA (daN) | |
|-----------|---|----------|--------------------------|-----|
| EM-260-K1 |  | 50x1.5 | 10 – 12 – 15 – 17 – SW11 | 120 |
| | | 50x2 | 10 – 12 – 15 – SW11 | 120 |
| | | 60x1.5 | 10 – 12 – 15 – SW11 | 150 |
| | | 60x2 | 10 – 12 – 15 – SW11 | 150 |
| | | 60x3 | 10 – 12 – 15 – SW11 | 150 |
| | | 70x2 | 15 | 150 |
| | | 70x3 | 15 – 17 | 150 |
| | | 80x2 | 10 – 12 – 15 – 17 – SW11 | 150 |

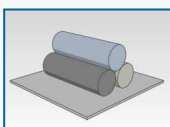


CAZOLETA: ACERO AP-02 CINCADO
CASQUILLO: POLIPROPILENO

DIN625 6003-2RS1 (PARA EJE Ø17)
DIN625 6202-2RS1 (PARA EL RESTO)

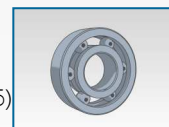


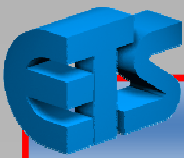
| SERIE | TUBO (mm) | EJE (mm) | CARGA (daN) | |
|-----------|---|----------|--------------------------|-----|
| EM-260-K2 |  | 63.5x2.9 | 20 | 200 |
| | | 80x2 | 16 – 17 – 20 – SW14 | 250 |
| | | 80x3 | 16 – 17 – 20 – SW14 | 250 |
| | | 89x3 | 16 – 17 – 20 – 25 – SW14 | 250 |
| | | 89x3.25 | 16 – 17 – 20 – SW14 | 250 |
| | | 108x3.25 | 16 – 17 – 20 – 25 – SW14 | 250 |



CAZOLETA: ACERO AP-02 CINCADO
CASQUILLO: POLIPROPILENO

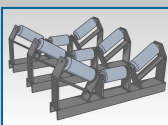
DIN625 6004-2RS1 (TUBO Ø63.5)
DIN625 6205-2RS1 (TUBO Ø89 Y Ø108)
DIN625 6204-2RS1 (TODOS EXCEPTO Ø63.5)





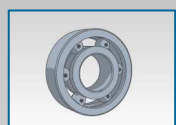
GAZOLETAS METÁLICAS SOLDADAS

| SERIE | | TUBO (mm) | EJE (mm) | ESPELOR (mm) |
|-------|--|-----------|----------|--------------|
| EMS | | 60x2 | 20 | 1.5 |
| | | 76x2 | 20 | 1.5 |
| | | 90x2 | 20 | 1.5 |

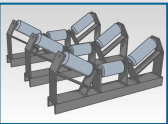


MINERÍA SEMIPESADA

DIN625 6204-2RS1

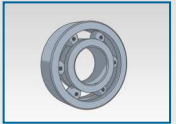


| SERIE | | TUBO (mm) | EJE (mm) | ESPELOR (mm) |
|--------|--|-----------|----------|--------------|
| EMP-K1 | | 60x3 | 20 | 2 |
| | | 63.5x2.9 | 20 | 2 |
| | | 70x2 | 20 | 2 |
| | | 70x2.9 | 20 | 2 |
| | | 76x2 | 20 | 2 |
| | | 76x2.9 | 20 | 2 |

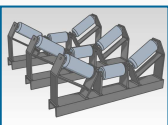


MINERÍA PESADA

DIN 625 6204-2RS1



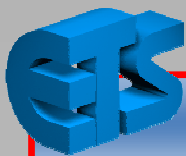
| SERIE | | TUBO (mm) | EJE (mm) | ESPELOR (mm) |
|--------|--|-----------|-------------------|---------------|
| EMP-K2 | | 63x3 | 20 | 1.5 |
| | | 80x2 | 20 | 2 |
| | | 80x3 | 20 | 2 |
| | | 89x3 | 20 – 25 | 1.5 – 2 |
| | | 108x3.6 | 20 – 25 – 30 | 2 – 3 |
| | | 133x4 | 20 – 25 – 30 – 40 | 2.5 – 3.5 – 4 |
| | | 159x4 | 25 – 30 – 40 | 2.5 – 4 |



MINERÍA PESADA

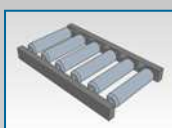
DIN625 6204-2RS1 (EJE Ø20)
 DIN625 6305-2RS1 (EJE Ø25)
 DIN625 6306-2RS1 (EJE Ø30)
 DIN625 6308-2RS1 (EJE Ø40)





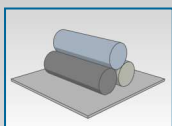
PIÑONES TERMOPLÁSTICOS

| SERIE | | TUBO (mm) | EJE (mm) | CARGA (daN) |
|------------------|--|-----------|----------|-------------|
| EM-440 EM-441 | | 50x1.5 | 12 – 14 | 40 |
| | | 50x2.8 | 12 – 14 | 40 |
| | | 60x1.5 | 12 – 14 | 40 |
| | | 60x2 | 12 – 14 | 40 |
| | | 63x3 | 12 – 14 | 40 |
| | | 80x2 | 12 – 14 | 40 |



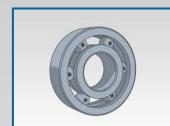
EM-440: ACUMULACIÓN
EM-441: FIJO

SIMPLE
Z9 - 1/2"

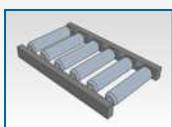


POLIAMIDA 6

DIN625 6202-2RS1

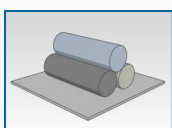


| SERIE | | TUBO (mm) | EJE (mm) | CARGA (daN) |
|------------------|--|-----------|----------|-------------|
| EM-450 EM-451 | | 50x1.5 | 12 – 14 | 40 |
| | | 50x2.8 | 12 – 14 | 40 |
| | | 60x1.5 | 12 – 14 | 40 |
| | | 60x2 | 12 – 14 | 40 |
| | | 63x3 | 12 – 14 | 40 |
| | | 80x2 | 12 – 14 | 40 |



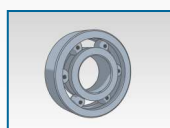
EM-450: ACUMULACIÓN
EM-451: FIJO

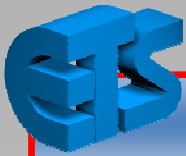
SIMPLE
Z11 - 1/2"



POLIAMIDA 6

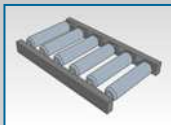
DIN625 6202-2RS1





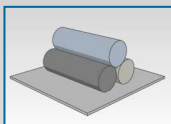
PIÑONES TERMOPLÁSTICOS

| SERIE | | TUBO (mm) | EJE (mm) | CARGA (daN) |
|------------------|--|-----------|----------|-------------|
| EM-470 EM-471 | | 50x1.5 | 12 – 14 | 40 |
| | | 50x2.8 | 12 – 14 | 40 |
| | | 60x1.5 | 12 – 14 | 40 |
| | | 60x2 | 12 – 14 | 40 |
| | | 63x3 | 12 – 14 | 40 |
| | | 80x2 | 12 – 14 | 40 |



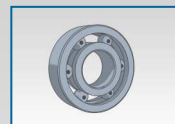
EM-470: ACUMULACIÓN
EM-471: FIJO

SIMPLE
Z14 - 1/2"

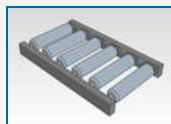


POLIAMIDA 6

DIN625 6202-2RS1

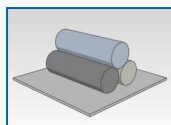


| SERIE | | TUBO (mm) | EJE (mm) | CARGA (daN) |
|------------------|--|-----------|----------|-------------|
| EM-480 EM-481 | | 50x1.5 | 12 – 14 | 40 |
| | | 50x2.8 | 12 – 14 | 40 |
| | | 60x1.5 | 12 – 14 | 40 |
| | | 60x2 | 12 – 14 | 40 |
| | | 63x3 | 12 – 14 | 40 |
| | | 80x2 | 12 – 14 | 40 |



EM-480: ACUMULACIÓN
EM-481: FIJO

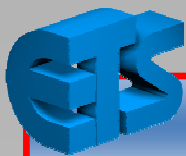
DOBLE
Z14 - 1/2"



POLIAMIDA 6

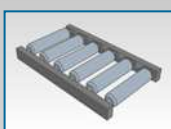
DIN625 6202-2RS1





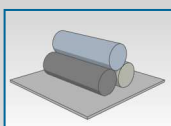
PIÑONES METÁLICOS EMBUTIDOS

| SERIE | | TUBO (mm) | EJE (mm) | CARGA (daN) |
|------------------|--|-----------|----------|-------------|
| EM-444 EM-445 | | 50x1.5 | 12 – 14 | 40 |
| | | 50x2.8 | 12 – 14 | 40 |
| | | 60x1.5 | 12 – 14 | 40 |
| | | 60x2 | 12 – 14 | 40 |
| | | 63x3 | 12 – 14 | 40 |
| | | 80x2 | 12 – 14 | 40 |



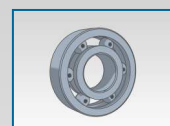
EM-444: ACUMULACIÓN
EM-445: FIJO

SIMPLE
Z9 - 1/2"

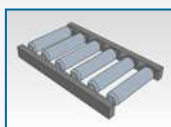


ACERO F-114

DIN625 6202-2RS1

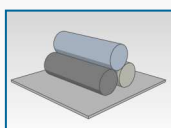


| SERIE | | TUBO (mm) | EJE (mm) | CARGA (daN) |
|------------------|--|-----------|----------|-------------|
| EM-464 EM-465 | | 50x1.5 | 12 – 14 | 40 |
| | | 50x2.8 | 12 – 14 | 40 |
| | | 60x1.5 | 12 – 14 | 40 |
| | | 60x2 | 12 – 14 | 40 |
| | | 63x3 | 12 – 14 | 40 |
| | | 80x2 | 12 – 14 | 40 |



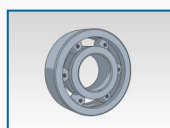
EM-464: ACUMULACIÓN
EM-465: FIJO

DOBLE
Z9 - 1/2"



ACERO F-114

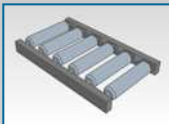
DIN625 6202-2RS1





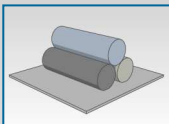
PIÑONES METÁLICOS EMBUTIDOS

| SERIE | | TUBO (mm) | EJE (mm) | CARGA (daN) |
|------------------|--|-----------|----------|-------------|
| EM-454 EM-455 | | 50x1.5 | 12 – 14 | 40 |
| | | 50x2.8 | 12 – 14 | 40 |
| | | 60x1.5 | 12 – 14 | 40 |
| | | 60x2 | 12 – 14 | 40 |
| | | 63x3 | 12 – 14 | 40 |
| | | 80x2 | 12 – 14 | 40 |



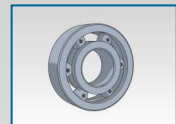
EM-454: ACUMULACIÓN
EM-455: FIJO

SIMPLE
Z11 - 1/2"

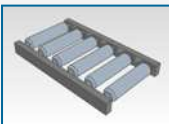


ACERO F-114

DIN625 6202-2RS1

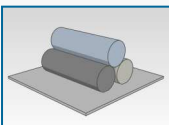


| SERIE | | TUBO (mm) | EJE (mm) | CARGA (daN) |
|------------------|--|-----------|----------|-------------|
| EM-460 EM-461 | | 50x1.5 | 12 – 14 | 40 |
| | | 50x2.8 | 12 – 14 | 40 |
| | | 60x1.5 | 12 – 14 | 40 |
| | | 60x2 | 12 – 14 | 40 |
| | | 63x3 | 12 – 14 | 40 |
| | | 80x2 | 12 – 14 | 40 |



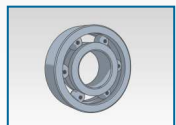
EM-460: ACUMULACIÓN
EM-461: FIJO

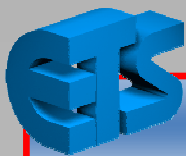
DOBLE
Z11 - 1/2"



ACERO F-114

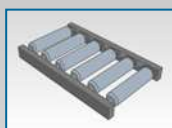
DIN625 6202-2RS1





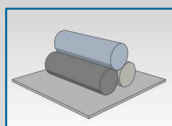
PIÑONES METÁLICOS EMBUTIDOS

| SERIE | | TUBO (mm) | EJE (mm) | CARGA (daN) |
|--|--|-----------|----------|-------------|
| EM-506 EM-507 EM-553 CON EM-554 CON | | 50x1.5 | 12 – 14 | 40 |
| | | 50x2.8 | 12 – 14 | 40 |
| | | 60x1.5 | 12 – 14 | 40 |
| | | 60x2 | 12 – 14 | 40 |
| | | 63x3 | 12 – 14 | 40 |
| | | 80x2 | 12 – 14 | 40 |



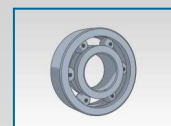
EM-506: ACUMULACIÓN
EM-507: FIJO
EM-553: ACUMULACIÓN – PARA CONOS
EM-554: FIJO – PARA CONOS

SIMPLE
Z14 - 1/2"

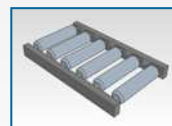


ACERO F-114

DIN625 6202-2RS1

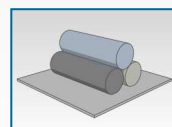


| SERIE | | TUBO (mm) | EJE (mm) | CARGA (daN) |
|------------------|--|-----------|----------|-------------|
| EM-500 EM-501 | | 50x1.5 | 12 – 14 | 40 |
| | | 50x2.8 | 12 – 14 | 40 |
| | | 60x1.5 | 12 – 14 | 40 |
| | | 60x2 | 12 – 14 | 40 |
| | | 63x3 | 12 – 14 | 40 |
| | | 80x2 | 12 – 14 | 40 |



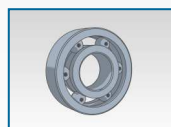
EM-500: ACUMULACIÓN
EM-501: FIJO

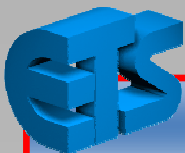
DOBLE
Z14 - 1/2"



ACERO F-114

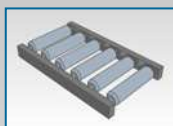
DIN625 6202-2RS1





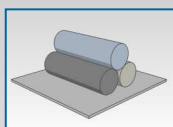
PIÑONES METÁLICOS SOLDADOS

| SERIE | | TUBO (mm) | SERIE | |
|----------------------|--|-----------|-------|----------------------|
| EM-502 EM-552 CON | | 50x1.5 | | EM-508 EM-555 CON |
| | | 60x2 | | |
| | | 80x2 | | |



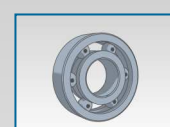
MANUTENCIÓN

EM-502 DOBLE Z14 - 1/2"
EM-508 SIMPLE Z14 - 1/2"
EM-552 DOBLE Z14 - 1/2" — PARA CONOS
EM-555 SIMPLE Z14 - 1/2" — PARA CONOS

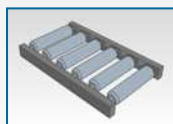


ACERO F-114

DIN625 D=35mm ; B=11mm

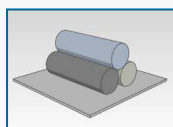


| SERIE | | TUBO (mm) | SERIE | |
|--------|--|-----------|-------|--------|
| EM-510 | | 80x2 | | EM-511 |
| | | 80x3 | | |
| | | 108x3.6 | | |
| | | 133x4 | | |



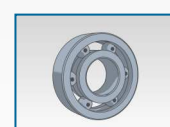
PALETIZACIÓN

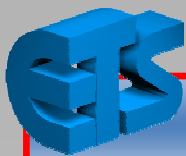
EM-510 DOBLE Z15 - 5/8"
EM-511 SIMPLE Z15 - 5/8"



ACERO F-114

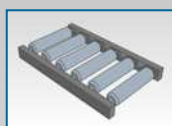
EM-510 DIN625 D=47mm ; B=12mm
D=47mm ; B=16mm
EM-511 DIN625 D=47mm ; B=14mm





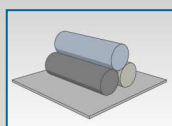
PIÑONES METÁLICOS SOLDADOS

| SERIE | | TUBO (mm) | SERIE | |
|--------|--|-----------|-------|--------|
| EM-512 | | 89x3 | | EM-513 |
| | | 108x3.6 | | |
| | | 133x4 | | |



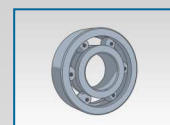
PALETIZACIÓN

EM-512 DOBLE Z13 - 3/4"
EM-513 SIMPLE Z13 - 3/4"

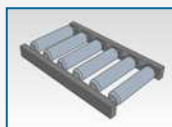


ACERO F-114

DIN625 D=47mm ; B=14mm

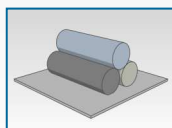


| SERIE | | TUBO (mm) | SERIE | |
|--------|--|------------|-------|------------|
| EM-566 | | 30x1.5 | | EM-566 CON |
| | | 30x1.5 CON | | |



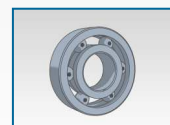
MANUTENCIÓN

EM-566 DOBLE Z12 - 3/8"
EM-566 DOBLE Z12 - 3/8" — PARA CONOS



ACERO F-114

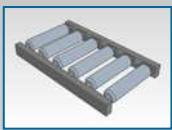
DIN625 D=22mm ; B=6mm
D=22mm ; B=7mm





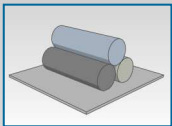
POLEAS TERMOPLÁSTICAS

| SERIE | | TUBO (mm) | EJE (mm) | CARGA (daN) |
|------------------|--|-----------|----------|-------------|
| EM-420 EM-421 | | 50x1.5 | 12 – 14 | 40 |
| | | 50x2.8 | 12 – 14 | 40 |
| | | 60x1.5 | 12 – 14 | 40 |
| | | 60x2 | 12 – 14 | 40 |
| | | 63x3 | 12 – 14 | 40 |
| | | 80x2 | 12 – 14 | 40 |



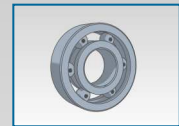
EM-420: ACUMULACIÓN
EM-421: FIJO

DOBLE GARGANTA
CORREA TOROIDAL Ø8mm

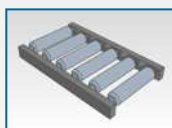


POLIAMIDA 6

DIN625 6202-2RS1

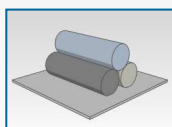


| SERIE | | TUBO (mm) | EJE (mm) | CARGA (daN) |
|------------------|--|-----------|----------|-------------|
| EM-430 EM-431 | | 50x1.5 | 12 – 14 | 40 |
| | | 50x2.8 | 12 – 14 | 40 |
| | | 60x1.5 | 12 – 14 | 40 |
| | | 60x2 | 12 – 14 | 40 |
| | | 63x3 | 12 – 14 | 40 |
| | | 80x2 | 12 – 14 | 40 |



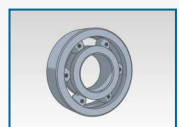
EM-430: ACUMULACIÓN
EM-431: FIJO

CORREA DENTADA
Z20 - 8M



POLIAMIDA 6

DIN625 6202-2RS1





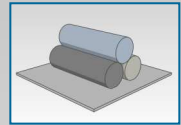
CIERRE LABERÍNICO

| SERIE | | RODAMIENTO | EXTERIOR (mm) | EJE (mm) | ANCHO (mm) |
|-------|---|------------|---------------|----------|------------|
| CL |  | 6303 | 47 | 17 | 22.5 |
| | | 6204 | 47 | 20 | 22.5 |
| | | 6305 | 62 | 25 | 23.5 |
| | | 6206 | 62 | 30 | 23.5 |
| | | 6306 | 72 | 30 | 24.5 |
| | | 6308 | 90 | 40 | 23.1 |



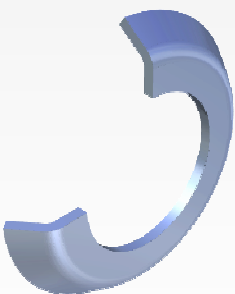
PARA CABEZALES METÁLICOS SOLDADOS
MINERÍA PESADA Y SEMIPESADA
PALETIZACIÓN

CASQUILLO: POLIPROPILENO
TAPA: ACERO AP-02 CINCADO
LABERINTO: POLIPROPILENO

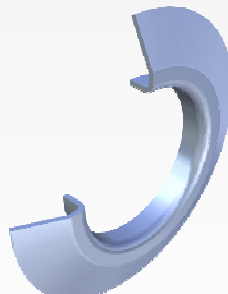


ALETAS GUÍA

| SERIE | TIPO | Ø TUBO (mm) | Ø EXT. (mm) | ANCHO (mm) | E (mm) | |
|-------|--------|-------------|-------------|------------|--------|-----------------------------|
| BS | BS - M | 60-100 | 60 | 100 | 15 | 4 |
| | | 60-108 | 60 | 108 | 15 | 4 |
| | | 80-130 | 80 | 130 | 12 | 4 |
| | BS - K | 50-130 | 50 | 130 | 10 | 1.5 |
| | | 60-130 | 60 | 130 | 10 | 1.5 |
| | | 80-150 | 80 | 150 | 14 | 2.5 |
| | | 89-150 | 89 | 150 | 14 | 2.5 |
| | | 108-150 | 108 | 150 | 14 | 2.5 |
| | BS - D | 80-130 | 80 | 130 | 25 | TERMOPLÁSTICA Y METÁLICA |
| | | 89x150 | 89 | 150 | 25 | |



BS-M



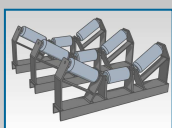
BS-K



BS-D

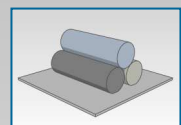


| SERIE | | TIPO | Ø TUBO (mm) | Ø EXT. (mm) | ANCHO (mm) |
|----------------------|--|------------|-------------|-------------|------------|
| GOMAS AMORTIGUADORAS | | GA 63-89 | 60 – 63 | 89 | 35 |
| | | GA 63-108 | 60 – 63 | 108 | 45 |
| | | GA 89-133 | 89 | 133 | 35 |
| | | GA 89-159 | 89 | 159 | 42 |
| | | GA 108-159 | 108 | 159 | 26 |
| | | GA 108-180 | 108 | 180 | 40 |

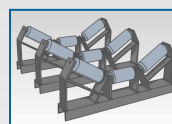


AMORTIGUACIÓN IMPACTOS
ZONA DE CARGA EN BANDAS

CAUCHO

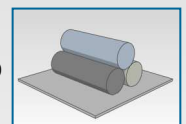


| SERIE | | TIPO | Ø TUBO (mm) | Ø EXT. (mm) | ANCHO (mm) |
|--------------|--|------------|-------------|-------------|------------|
| GOMAS OVALES | | GO 63-89 | 60 – 63 | 89 | 26 |
| | | GO 63-108 | 60 – 63 | 108 | 26 |
| | | GO 63-133 | 60 – 63 | 133 | 26 |
| | | GO 63-159 | 60 – 63 | 159 | 30 |
| | | GO 89-133 | 89 | 133 | 25 |
| | | GO 89-159 | 89 | 159 | 30 |
| | | GO 108-180 | 108 | 180 | 40 |

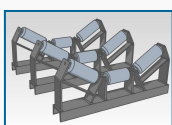


LIMPIEZA DE BANDAS
GUIADO

CAUCHO

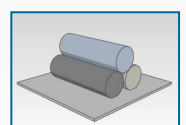


| SERIE | | TIPO | Ø TUBO (mm) | Ø EXT. (mm) | ANCHO (mm) |
|--------------------|--|-----------|-------------|-------------|------------|
| GOMAS HELICOIDALES | | GH 63-89 | 60 – 63 | 89 | 42 |
| | | GH 63-108 | 60 – 63 | 108 | 45 |
| | | GH 89-133 | 89 | 133 | 40 |
| | | GH 89-159 | 89 | 159 | 45 |



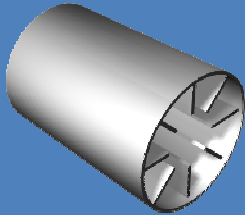
LIMPIEZA DE BANDAS

CAUCHO





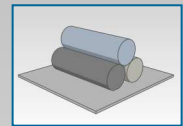
CONOS

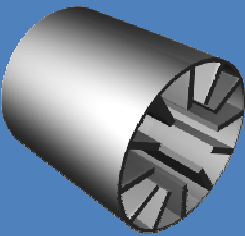
| SERIE | | TIPO | Ø TUBO (mm) | Ø MAX. (mm) | Ø MIN. (mm) | L (mm) |
|-------|---|-------|-------------|-------------|-------------|--------|
| EMT |  | EMT-1 | 30 | 39.6 | 34 | 83 |
| | | EMT-2 | 30 | 46.4 | 39.6 | 100 |
| | | EMT-3 | 30 | 53.2 | 46.4 | 100 |
| | | EMT-4 | 30 | 59.9 | 53.2 | 100 |
| | | EMT-5 | 30 | 66.7 | 59.9 | 100 |
| | | EMT-6 | 30 | 73.5 | 66.7 | 100 |

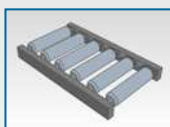


CURVAS DE RADIO INTERIOR= 500mm

POLIPROPILENO

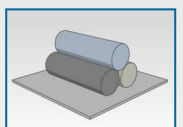


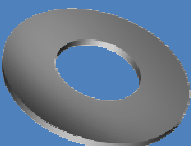
| SERIE | | TIPO | Ø TUBO (mm) | Ø MAX. (mm) | Ø MIN. (mm) | L (mm) |
|-------|---|--------|-------------|-------------|-------------|--------|
| EMC |  | EMC-1 | 50 | 59.9 | 54 | 90 |
| | | EMC-2 | 50 | 66.6 | 59.9 | 100 |
| | | EMC-3 | 50 | 73.4 | 66.6 | 100 |
| | | EMC-4 | 50 | 80.1 | 73.4 | 100 |
| | | EMC-5 | 50 | 86.9 | 80.1 | 100 |
| | | EMC-6 | 50 | 93.6 | 86.9 | 100 |
| | | EMC-7 | 50 | 100.4 | 93.6 | 100 |
| | | EMC-8 | 50 | 107.1 | 100.4 | 100 |
| | | EMC-9 | 50 | 113.9 | 107.1 | 100 |
| | | EMC-10 | 50 | 120.9 | 113.9 | 100 |

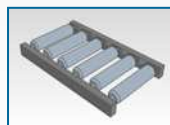


CURVAS DE RADIO INTERIOR= 800mm

POLIPROPILENO

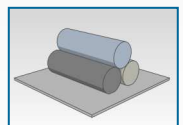


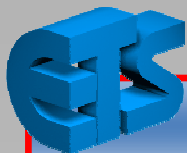
| SERIE | | TIPO | Ø TUBO (mm) | Ø EXT. (mm) | Ø INT. (mm) | E (mm) |
|-------|---|--------|-------------|-------------|-------------|--------|
| EMTT |  | EMTT-3 | 30 | 48.8 | 28.5 | 3 |
| | | EMTT-4 | 30 | 55.8 | 28.5 | 3 |
| | | EMTT-5 | 30 | 62.3 | 28.5 | 3 |
| | | EMTT-6 | 30 | 68.8 | 28.5 | 3 |



TAPAS PARA CONOS

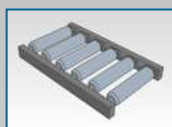
POLIPROPILENO





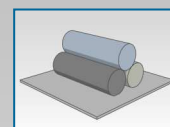
ROLDANAS

| SERIE | | | TIPO | Ø (mm) | EJE (mm) | CARGA (daN) |
|----------------|--|--|------|----------------|------------|-------------|
| UNIDIRECCIONAL | | | GMR | 48 | 6-8 (L=24) | 20 |
| | | | EMR | 48 | 6-8 (L=24) | 10 |
| | | | ALE | 48 ALETA 66 | 6-8 (L=24) | 10 |



CARRIL SIMPLE; PASO=52mm
CARRIL DOBLE; PASO=40mm

GMR: ACERO CINCADO
EMR: POLIAMIDA
ALE: POLIAMIDA

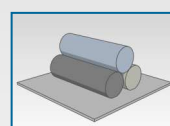


| SERIE | | TIPO | Ø (mm) | EJE (mm) | CARGA (daN) | |
|------------------|-------|------------|------------|----------|-------------|-----|
| MULTIDIRECCIONAL | | SIMPLE | OMNI-50 S | 50 | 8 | 5 |
| | | | OMNI-60 S | 60 | 8 | 10 |
| | | SIMPLE | OMNI-80 S | 80 | 8 | 20 |
| | | | OMNI-120 S | 120 | 12 | 125 |
| | DOBLE | | OKAR-120 S | 120 | 17 | 125 |
| | | | OMNI-50 D | 50 | 8 | 10 |
| | | OMNI-60 D | 60 | 8 | 20 | |
| | | OMNI-80 D | 80 | 8 | 40 | |
| | | OMNI-120 D | 120 | 12 | 250 | |
| | | OKAR-120 D | 120 | 17 | 250 | |



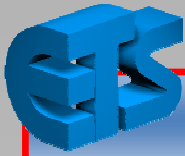
CAMINOS DE ROLDANAS
MESAS DE MANIPULACIÓN

Ø50, Ø60 Y Ø80: POM (DELRIN)
Ø120: POM O ACERO CINCADO



| SERIE | | TIPO | PASO | |
|----------------|------------------|----------------|--------------------|-----|
| CARRIL ROLDANA | | UNIDIRECCIONAL | SIMPLE CRU-48S-GMR | 52 |
| | | | DOBLE CRU-48D-GMR | 40 |
| | | DOBLE | SIMPLE CRU-48S-EMR | 52 |
| | | | DOBLE CRU-48D-EMR | 40 |
| | MULTIDIRECCIONAL | | DOBLE CRM-50D | 52 |
| | | | DOBLE CRM-60D | 62 |
| | | | DOBLE CRM-80D | 82 |
| | | | DOBLE CRM-120D | 100 |

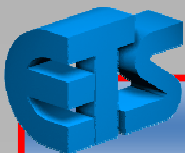
OTROS CARRILES CONSULTAR CON ETS



MINICARRIL

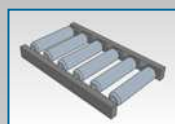
| SERIE | | TIPO | Ø (mm) | PASO (mm) | CARGA (daN) |
|------------|--|-----------|-------------|-----------|-------------|
| MINICARRIL | | MC-33 | 28 | 33 | 6 |
| | | MC-50 | 28 | 50 | 6 |
| | | MC-50 ALE | 28 ALETA 41 | 50 | 6 |

| ACCESORIOS | | | | | | |
|------------|------------|-------|----------------------|-------|-------------------|-------|
| | GRAPA | MC-GR | ABRAZADERA MUELLE | MC-MR | ABRAZADERA FRENO | MC-FR |
| | | | | | | |
| | RIEL GUÍA | MC-RR | SEGURO ANTIEXPANSIÓN | MC-SR | CONECTOR CARRILES | MC-CR |
| | | | | | | |
| | TOPE FINAL | MC-TR | TÀPA FINAL | MC-PR | TAPÓN FINAL | MC-BR |



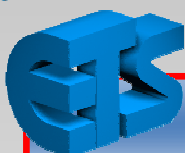
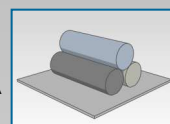
RODILLO AUTOLUBRICADO

| SERIE | | TIPO | Ø (mm) | L (mm) |
|----------------------------|--|-----------------|--------|--------|
| RA | | RODILLO RA60-16 | 60 | 84 |
| | | EJE RA60-16 | 16 | 89.5 |
| CARRILES CONSULTAR CON ETS | | | | |



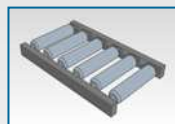
CARRIL TRANSPORTE DE PALETS

POLIAMIDA
AUTOLUBRICADA



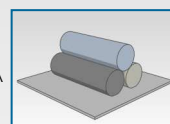
POLEA GUÍA

| SERIE | | TIPO | Ø (mm) | CARGA (daN) |
|-------|--|-----------------------|--------|-------------|
| PG | | POLEA SIMPLE PG28-40S | 60 | 10 |
| | | POLEA DOBLE PG28-40D | 16 | 20 |



GUIADO DE CORREA PLANA
TENSOR DE CORREA PLANA

POLIAMIDA



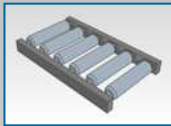
MUELLES

| SERIE | | TIPO | Ø EXT. (mm) | Ø HILO (mm) | L (mm) |
|-------|--|------|-------------|-------------|--------|
| M | | M-6 | 8.5 | 0.8 | 40 |
| | | M-8 | 11 | 1 | 40 |
| | | M-10 | 13.5 | 1.3 | 40 |
| | | M-12 | 16 | 1.5 | 50 |



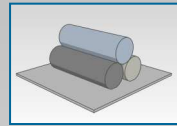
ARANDELAS

| SERIE | TIPO | Ø EXT. (mm) | Ø INT. (mm) | E (mm) |
|-------|------|-------------|-------------|--------|
| | A-8 | 16 | 8 | 1.8 |
| | A-10 | 20 | 10.2 | 1.8 |
| | A-12 | 23.8 | 12.2 | 1.8 |
| | A-14 | 24.8 | 14.2 | 1.8 |



CONTENIMIENTO DE CABEZALES
APOYO MUELLES

ACERO ST-37
ACERO AP-11

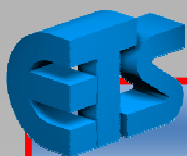


TAMBOR FRENO

| SERIE | TIPO | Ø TAMBOR (mm) | LONG. C (mm) | LONG. L (mm) | CARGA (daN) |
|-------|---------|---------------|--------------|--------------|-------------|
| | TF-300 | 120 | 182 | 220 | 300 |
| | TF-500 | 120 | 182 | 220 | 500 |
| | TF-800 | 120 | 182 | 220 | 800 |
| | TF-1000 | 120 | 182 | 220 | 1000 |
| | TF-1200 | 120 | 182 | 220 | 1200 |


LOS VALORES C Y L CORRESPONDEN A LA LONGITUD DEL BRAZO SOPORTE

| SERIE | TIPO | CARGA (daN) |
|-------|----------------------|-----------------|
| | EJE SUSTENTADOR | ETFL-105 105 |
| | MUELLE DE SUSPENSIÓN | MTFL-30 30 |
| | | MTFL-50 50 |
| | | MTFL-65 65 |
| | GANCHO AMORTIGUADOR | GTFL-67 67 |
| | | GTFL-88 88 |



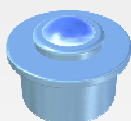
BOLAS TRANSPORTADORAS

| SERIE | TIPO | CARACTERÍSTICAS | Ø BOLA (mm) | CARGA (daN) |
|-------|-------|---|---------------------|-------------|
| BT | BT-GS | CUERPO ACERO MECANIZADO; BOLA METÁLICA O TERMOPLÁSTICA; PERNO ROSCADO M6, M8 Y M10; CON O SIN COLLAR. | 12-15 | HASTA 60 |
| | BT-MS | CUERPO ACERO GALVANIZADO; BOLA METÁLICA; CON COLLAR; SISTEMA DE ENGRASE SELLADO; CARGAS LIGERAS. | 15-22-30 | HASTA 250 |
| | BT-LS | CUERPO ACERO GALVANIZADO; BOLA TERMOPLÁSTICA; CON COLLAR; SISTEMA DE ENGRASE SELLADO; CARGAS LIGERAS. | 15-22-30 | HASTA 15 |
| | BT-RS | CUERPO ACERO MECANIZADO; BOLA METÁLICA; CON MUELLE DE CARGA; CON COLLAR; CARGAS PESADAS. | 22-30-45 | HASTA 215 |
| | BT-PS | CUERPO TERMOPLÁSTICO; BOLA METÁLICA O TERMOPLÁSTICA DE 1"; CON COLLAR. | 25.4 | HASTA 40 |
| | BT-HS | CUERPO ACERO ENDURECIDO; BOLA METÁLICA; CON O SIN COLLAR; ENGRASE SELLADO; CARGAS MUY PESADAS; LARGA VIDA ÚTIL. | 60-76-90 | HASTA 3000 |
| | BT-CS | CUERPO ACERO ENDURECIDO; BOLA METÁLICA; CON COLLAR; CARGAS PESADAS; PARA APLICACIONES A LA INTERPERIE; ENGRASE SELLADO. | 22-30-45 | HASTA 300 |
| | BT-DS | CUERPO ACERO MECANIZADO; BOLA TERMOPLÁSTICA; CON O SIN COLLAR; ORIFICIO AUTOLIMPIEZA; CARGAS PESADAS. | 8-12-15 22-30-45 | HASTA 40 |
| | BT-BS | CUERPO ACERO MECANIZADO; BOLA METÁLICA DE 1"; CON COLLAR; ORIFICIO AUTOLIMPIEZA; CARGAS PESADAS. | 25.4 | HASTA 200 |
| | BT-VS | CUERPO ACERO MECANIZADO; BOLA METÁLICA; CON O SIN COLLAR; ORIFICIO AUTOLIMPIEZA; CARGAS DE CHOQUE; LARGA VIDA ÚTIL. | 8-12-15 22-30-45 | HASTA 600 |

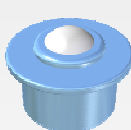
 PARA LAS DISTINTAS DIMENSIONES DE CADA SERIE Y OTRAS ESPECIFICACIONES CONSULTAR CON ETS



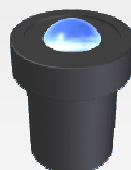
BT-GS



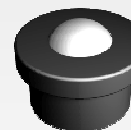
BT-MS



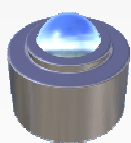
BT-LS



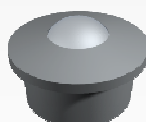
BT-RS



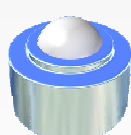
BT-PS



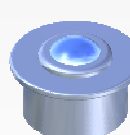
BT-HS



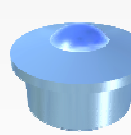
BT-CS



BT-DS



BT-BS



BT-VS

JOCAR TRANSMISIONES S.L.

www.jocartransmisiones.com

c/Lezeaga, 4 48002 Bilbao

Tlf 94 427 53 40 Fax 94 427 54 93

e-mail: jocar@jocartransmisiones.com