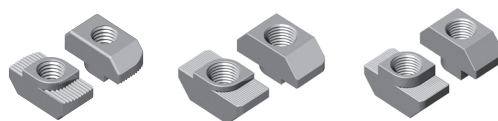
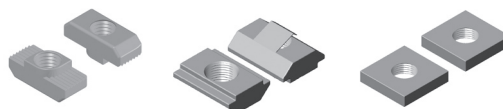


# ELEMENTOS DE FIJACIÓN

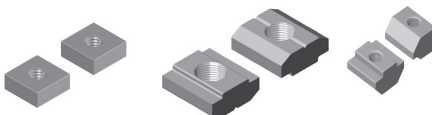
página/page 8



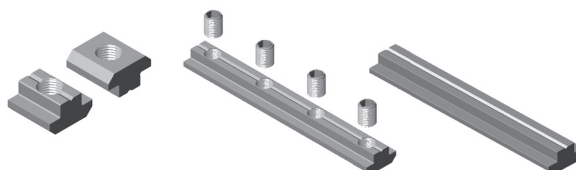
página/page 9



página/page 10



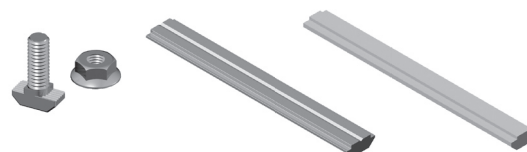
página/page 11



página/page 12



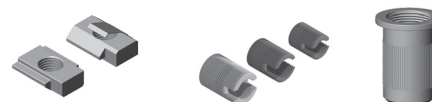
página/page 13



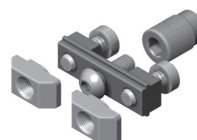
página/page 14



página/page 15



página/page 16



# FASTENING ELEMENTS



JOCAR TRANSMISIONES S.L.

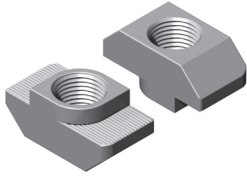
c/Lezeaga, 4 48002 Bilbao

Tlf 94 427 53 40 Fax 94 427 54 93

[www.jocartransmisiones.com](http://www.jocartransmisiones.com)

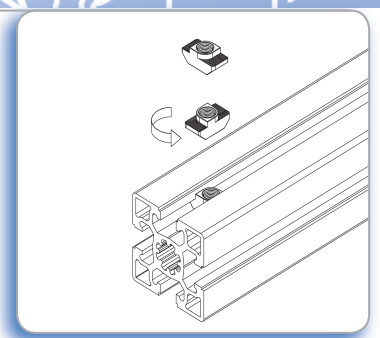
e-mail: [jocar@jocartransmisiones.com](mailto:jocar@jocartransmisiones.com)

**Tuerca cabeza martillo** Acero zincado  
**Hammer head nut** Zinc plated steel



Barcode	Roll	kg
52014	M4	0,007
52015	M5	0,007
52016	M6	0,007
52018	M8	0,006

10 mm



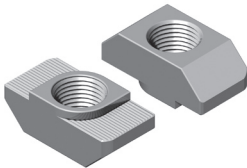
**Aplicación**

Para fijar elementos a los perfiles con canal de 10 mm. Posibilidad de inserción desde cualquier parte del perfil mediante giro.

**Application**

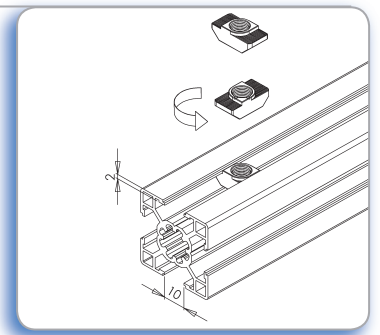
Used for the assembly of accessories on profiles with 10 mm slot. Nuts can be inserted sideways along the profile slot.

**Tuerca cabeza martillo baja** Acero zincado  
**Hammer head nut, low neck** Zinc plated steel



Barcode	Roll	kg
52064	M4	0,007
52065	M5	0,007
52066	M6	0,006
52068	M8	0,006

35



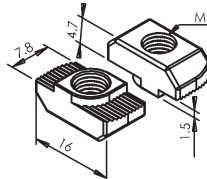
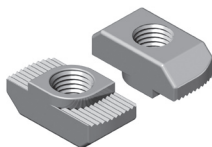
**Aplicación**

Para fijar elementos a los perfiles con canal de 10 mm y patilla 2 mm. Posibilidad de inserción desde cualquier parte del perfil mediante giro.

**Application**

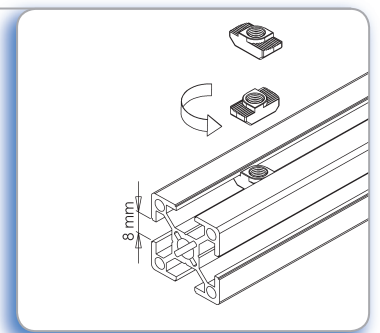
Used for the assembly of accessories on profiles with 10 mm slot and 2mm thickness. Nuts can be inserted sideways along the profile slot.

**Tuerca cabeza martillo, canal 8 mm** Acero zincado  
**Hammer head nut, 8 mm slot** Zinc plated steel



Barcode	Roll	kg
52074	M4	0,004
52075	M5	0,003
52076	M6	0,003

30



**Aplicación**

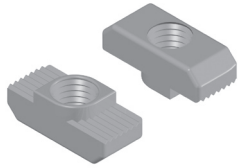
Para fijar elementos a los perfiles con canal de 8 mm. Posibilidad de inserción desde cualquier parte del perfil mediante giro.

**Application**

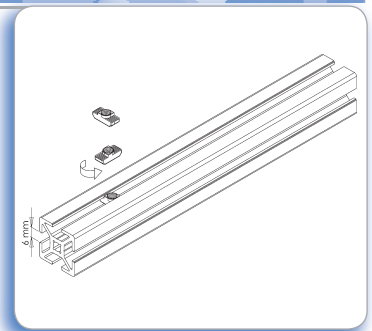
Used for the assembly of accessories on profiles with 8 mm slot. Nuts can be inserted sideways along the profile slot.

## Tuerca cabeza martillo canal 6 mm Acero zincado

### Hammer head nut, 6 mm slot Zinc plated steel


  
5208


  
M4


  
0,002


#### Aplicación

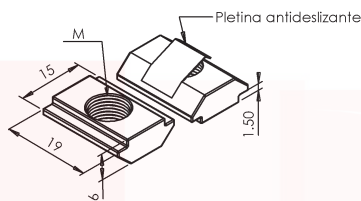
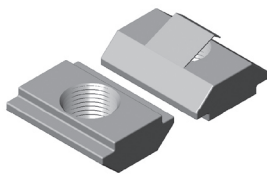
Para fijar elementos a los perfiles con canal 6 mm. Posibilidad de inserción desde cualquier parte del perfil mediante giro.

#### Application

Used for the assembly of accessories on profiles with 6 mm slot. Nuts can be inserted sideways along the profile slot.

## Tuerca en T antideslizamiento Acero zincado

### Spring nut Zinc plated steel



52024

M4

0,009

52025

M5

0,009

52026

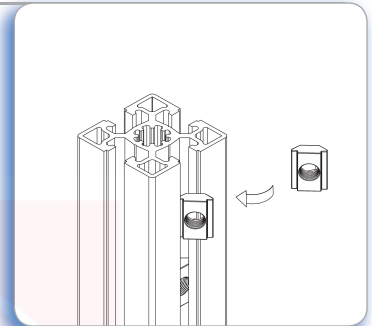
M6

0,008

52028

M8

0,008



#### Aplicación

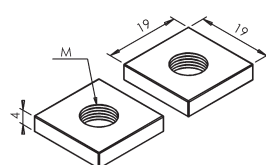
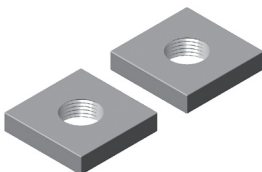
Indicada para montajes verticales. La tuerca, gracias a su pletina soldada queda fija y no desliza. Posibilidad de inserción desde cualquier parte del perfil mediante inclinación a 45°.

#### Application

Used for the assembly of accessories on profiles with 10 mm slot. Recommended for vertical assemblies. A welded spring plate at the bottom prevents sliding once introduced in the slot. Nuts can be inserted sideways along the profile slot by swivelling 45°.

## Tuerca cuadrada Acero zincado

### Square nut Zinc plated steel



52034

M4

0,010

52035

M5

0,010

52036

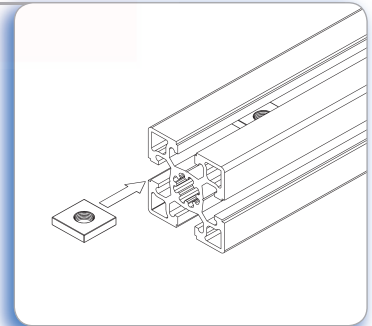
M6

0,009

52038

M8

0,009



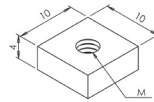
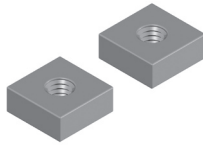
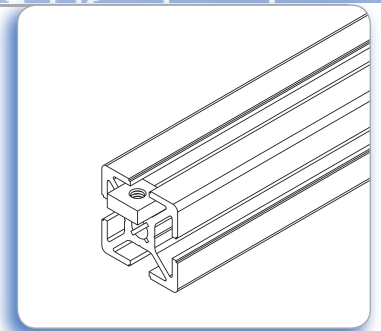
#### Aplicación

Para fijar elementos a los perfiles con canal 10 mm. Debe ser introducida por el extremo del perfil.

#### Application

Used for the assembly of accessories on profiles with 10 mm slot. Nuts must be inserted from the front in the profile slot.

**Tuerca cuadrada, canal 6 mm** Acero zincado  
**Square nut, 6 mm slot** Zinc plated steel



52084	M4	0,04
52085	M5	0,04
52086	M6	0,04

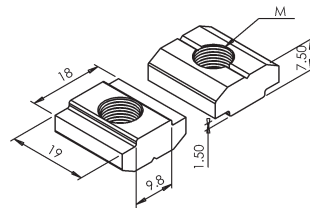
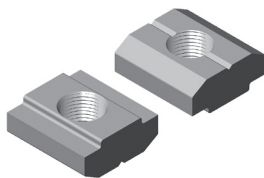
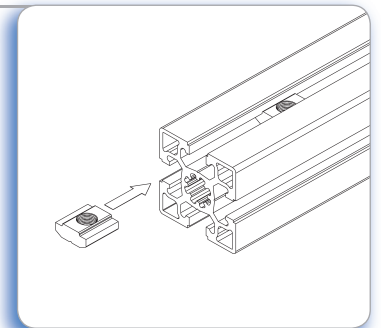
**Aplicación**

Para fijar elementos a los perfiles con canal de 6 mm. Debe ser introducida por el extremo del perfil.

**Application**

Used for the assembly of accessories on profiles with 6 mm slot. Nuts must be inserted from the front in the profile slot.

**Tuerca rectangular en T** Acero zincado  
**T-slot nut** Zinc plated steel



52044	M4	0,016
52045	M5	0,015
52046	M6	0,014
52048	M8	0,014

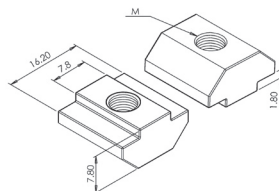
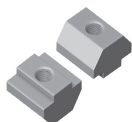
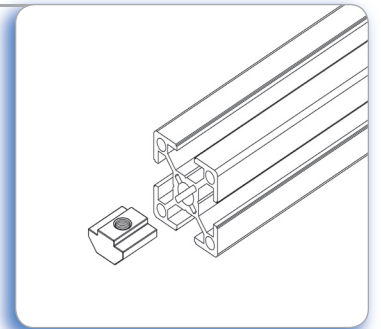
**Aplicación**

Para fijar elementos a los perfiles con canal de 10 mm. Debe ser introducida por el extremo del perfil.

**Application**

Used for the assembly of accessories on profiles with 10 mm slot. Nuts must be inserted from the front in the profile slot.

**Tuerca rectangular en T, canal 8 mm** Acero zincado  
**T-slot nut, 8 mm slot** Zinc plated steel



52094	M4	0,014
52095	M5	0,014
52096	M6	0,014
52098	M8	0,013

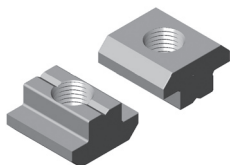
**Aplicación**

Para fijar accesorios a los perfiles con canal de 8 mm. Debe ser introducida por el extremo del perfil.

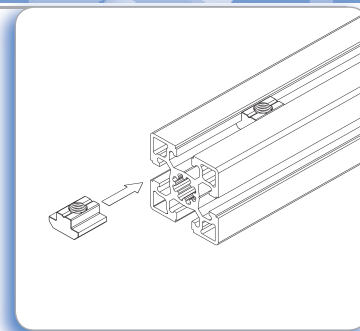
**Application**

Used for the assembly of accessories on profiles with 8 mm slot. Nuts must be inserted from the front in the profile slot.

**Tuerca en T cuello alto** Acero zincado  
**Heavy duty T-slot nut** Zinc plated steel



Barcode	Thread	Weight (kg)
52054	M4	0,020
52055	M5	0,019
52056	M6	0,019
52058	M8	0,017



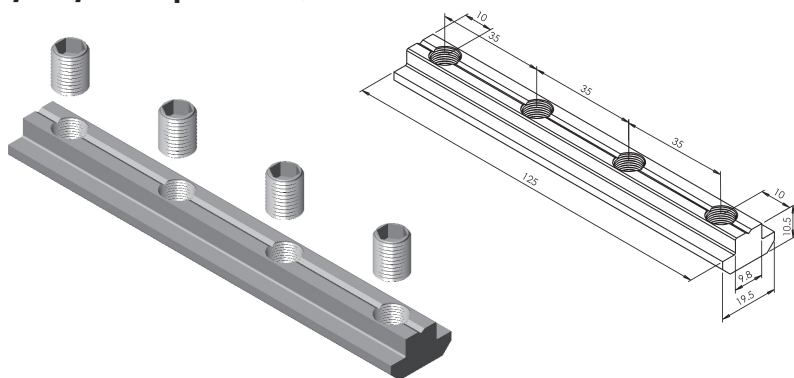
**Aplicación**

Para fijar elementos a los perfiles con canal de 10 mm. Permite aplicar grandes fuerzas. Debe ser introducida por el extremo del perfil.

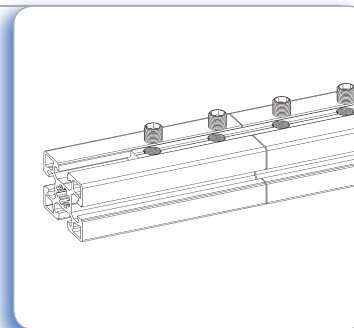
**Application**

Used for the assembly of accessories on profiles with 10 mm slot. Recommended for very heavy duty fastening applications. Nuts must be inserted from the front in the profile slot.

**Regleta de unión de perfiles** Acero zincado  
**Heavy duty T-slot profile** Zinc plated steel



Barcode	Length	Quantity	Weight (kg)
5210125	125 mm	4 x M8	0,125



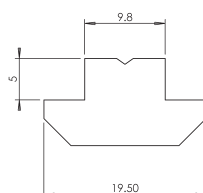
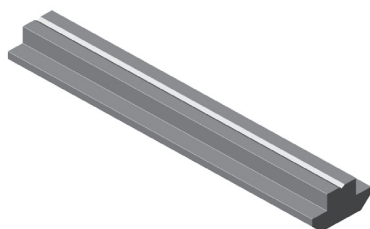
**Aplicación**

Para la unión longitudinal de dos perfiles de canal 10 mm. El suministro incluye 4 espárragos M8. Esta unión no necesita mecanización.

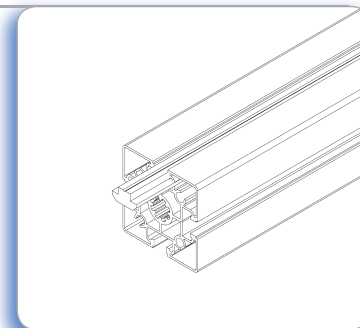
**Application**

Suitable for the longitudinal connection of two profiles with 10 mm slot. Standard supply includes 4 M8 screws. Profiles need no machining.

**Perfil en T cuello alto** Acero  
**Heavy duty T-slot profile** Steel



Barcode	Length	Weight (kg)
52101000	1000 mm	1,150



**Aplicación**

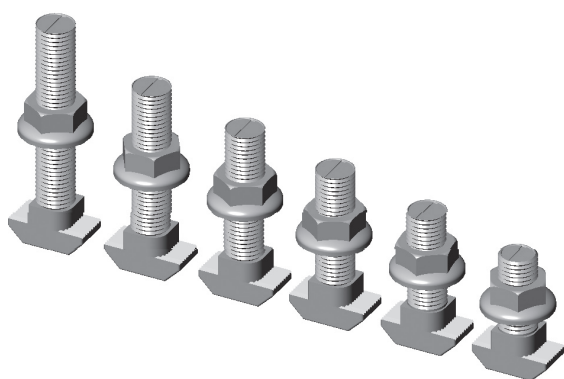
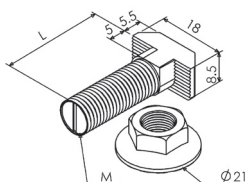
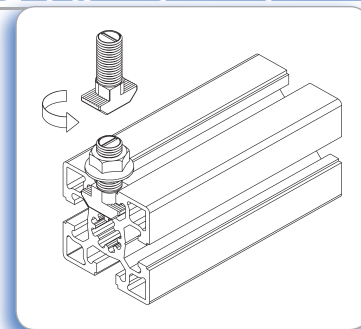
Para fijar accesorios a los perfiles con canal de 10 mm. El perfil debe ser introducido por el extremo. Acero sin tratar.

**Application**

Used for the assembly of accessories on profiles with 10 mm slot. It must be inserted from the edge. Raw steel.

**Tornillo cabeza martillo + tuerca, canal 10 mm** Acero 8.8 zincado  
**Hammer head bolt + hex flange nut, 10 mm slot** Zinc plated steel 8.8

10 mm






**Aplicación**

Para la fijación de accesorios a los perfiles de canal 10 mm. Gracias al dentado de la tuerca y a su mayor diámetro (21 mm), la fijación es máxima.

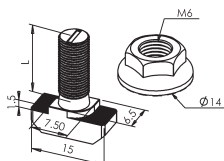
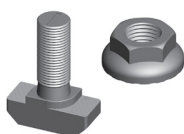
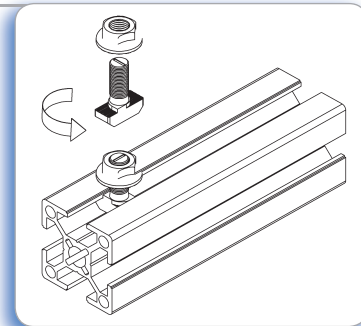
**Application**

For fixing accessories on profiles with 10 mm slot. Due to the bottom serrations and the larger diameter of the nut (21 mm), fixing is optimum.

		
525020	M8x20	0,019
525025	M8x25	0,020
525030	M8x30	0,022
525035	M8x35	0,024
525040	M8x40	0,026
525050	M8x50	0,029
525070	M8x70	0,034

**Tornillo cabeza martillo + tuerca, canal 8 mm** Acero 8.8 zincado  
**Hammer head bolt + hex flange nut, 8 mm slot** Zinc plated steel 8.8

30



		
525116	M6x16 mm	0,010

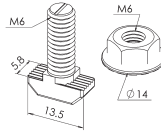
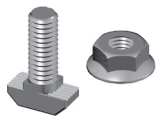
**Aplicación**

Para la fijación de accesorios a los perfiles de boca 8 mm. Gracias al dentado de la tuerca, la fijación es máxima.

**Application**

For fixing accessories on profiles with 8 mm slot. Due to the bottom serrations of the nut, fixing is optimum.

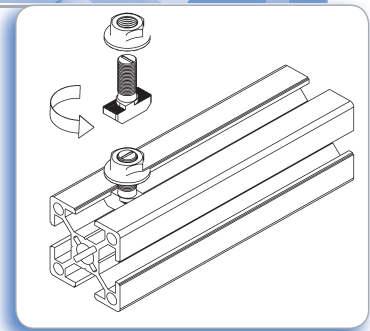
**Tornillo cabeza martillo + tuerca, canal 6 mm** Acero 8.8 zincado  
**Hammer head bolt + hex flange nut, 6 mm slot** Zinc plated steel 8.8



525113

M6x13 mm

0,009



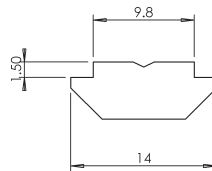
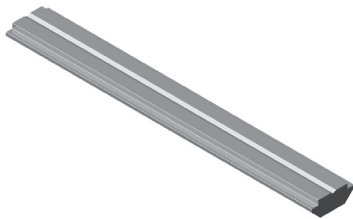
**Aplicación**

Para la fijación de elementos a los perfiles de canal 6 mm. Gracias al dentado de la tuerca, la fijación es máxima.

**Application**

For fixing accessories on profiles with 6 mm slot. Due to the bottom serrations of the nut, fixing is optimum

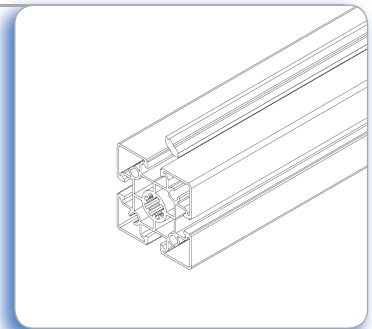
**Perfil en T insertable** Acero  
**Insertable T-slot profile** Steel



52102000

1.000 mm

1,150



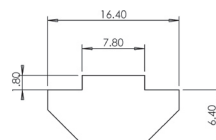
**Aplicación**

Para fijar accesorios a los perfiles con canal de 10 mm. Posibilidad de inserción desde cualquier parte del perfil mediante giro. Acero sin tratar.

**Application**

Used for the assembly of accessories on profiles with 10 mm slot. It can be inserted sideways along the profile slot. Raw steel.

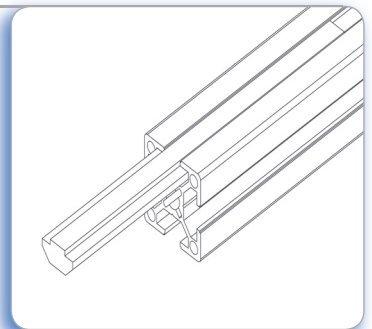
**Perfil en T canal 8 mm, Aluminio**  
**T-slot profile, 8 mm slot, Aluminium**



52103000

1000 mm

0,3



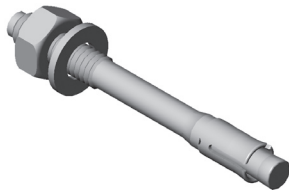
**Aplicación**

Para fijar accesorios o unir perfiles con canal de 8 mm. El perfil debe ser introducido por el extremo. Aluminio crudo.

**Application**

Used for the assembly of accessories and connection of profiles with 8 mm slot. It must be inserted from the front in the profile slot. Raw aluminium.

**Taco de expansión** Acero zincado  
**Through bolt anchor** Zinc plated steel



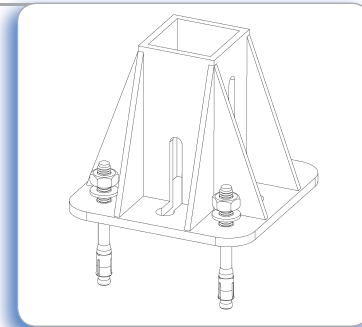
5290



M10x90 mm



0,059



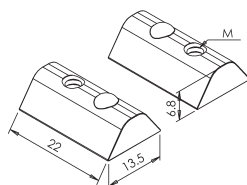
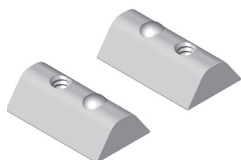
**Aplicación**

Para la fijación de forma segura de soportes y placas al suelo.

**Application**

To firmly join and secure positioning elements to the floor.

**Tuerca redonda con bola** Acero zincado  
**Spring-ball nut** Zinc plated steel



5064



M4



0,008

5065

M5

0,008

5066

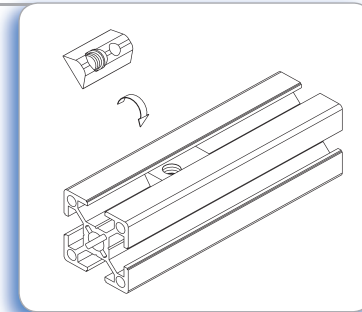
M6

0,009

5068

M8

0,009



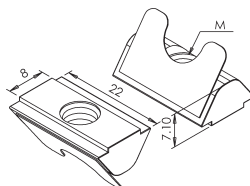
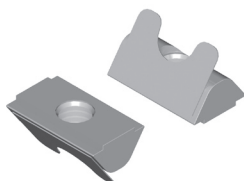
**Aplicación**

Para fijación de elementos a distintos perfiles de boca 8 mm.

**Application**

For fixing accessories on different profiles with 8 mm slot.

**Tuerca redonda con pestaña** Acero zincado  
**Spring-plate nut** Zinc plated steel



5074



M4



0,008

5075

M5

0,008

5076

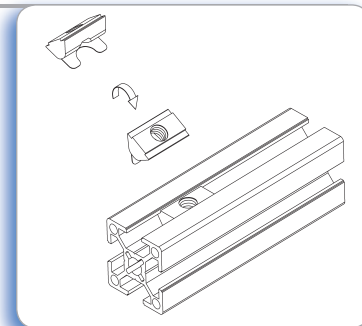
M6

0,009

5078

M8

0,009



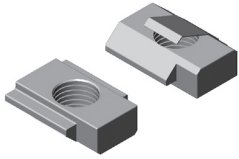
**Aplicación**

Para fijación de elementos a distintos perfiles de boca 8 mm.

**Application**

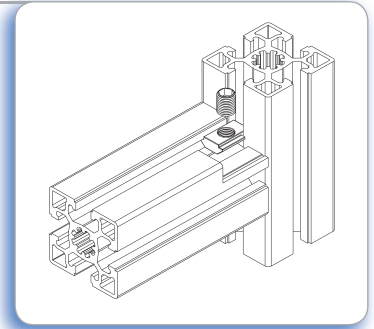
For fixing accessories on different profiles with 8 mm slot.



**Refuerzo antigiro** Acero zincado**Anti-rotation nut** Zinc plated steel
  
5512


  
M8

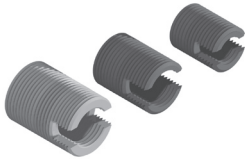

  
0,008


  
10 mm
**Aplicación**

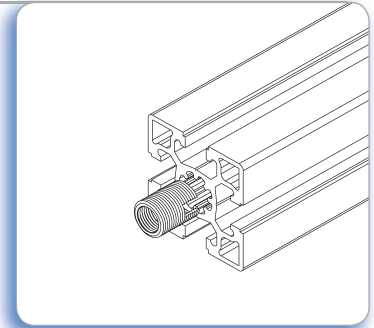
Para evitar el giro en aquellos perfiles unidos con tornillo autorroscante. Posibilidad de inserción desde cualquier parte del perfil mediante inclinación 45°.

**Application**

To avoid rotation of profiles when using socket T bolts. Used on profiles with 10 mm slot. Nuts can be inserted sideways along the profile slot by swivelling 45°.

**Casquillo reductor** Acero zincado**Threaded inserts** Zinc plated steel

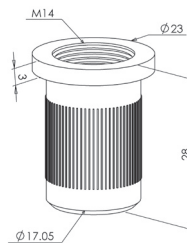
	$\varnothing_{int.}$	$\varnothing_{ext.}$		
52918	M8	M12	15 mm	0,005
529110	M10	M14	18 mm	0,007
529112	M12	M16	22 mm	0,011

**Aplicación**

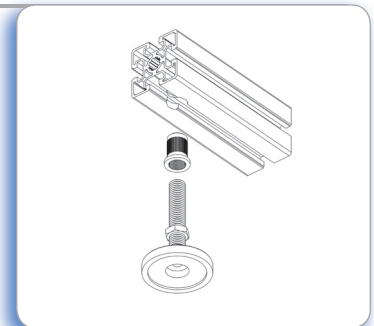
Permite roscar accesorios de M8, M10, M12 en el núcleo central de los perfiles. Se recomienda su uso en estructuras sometidas a vibraciones.

**Application**

Suitable for front assembly of accessories with M8, M10, M12 thread. Recommended for connexion of profiles subjected to vibrations.

**Encaje de rosca** Acero zincado**Threaded sleeve** Zinc plated steel
  
5291


  
 $\varnothing_{int.}$   
M14


  
0,025
**Aplicación**

Para roscar accesorios en los laterales de los perfiles,

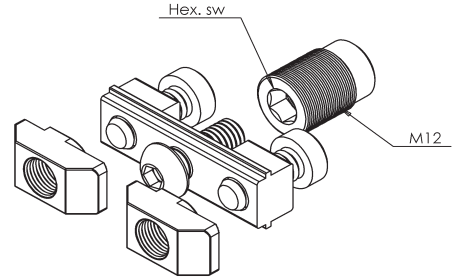
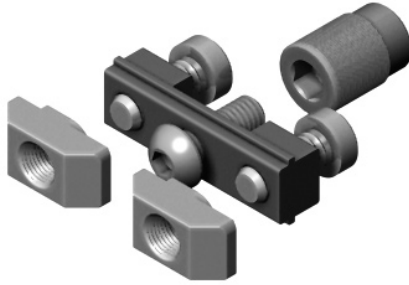
**Application**

To thread accessories in profile sides,

**Fijación ajustable oculta** Acero zincado  
**Adjustable connector** Zinc plated steel



**No necesita mecanización**  
**No Machining needed**



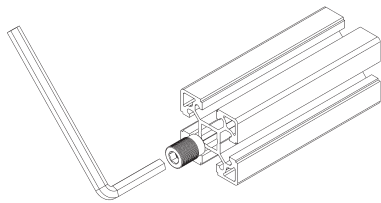
5213	40x40	0,065
5212	45x45	0,070
5214	60x60	0,090
5215	40x80	0,130
5216	45x90	0,170

**Aplicación**

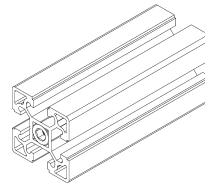
Garantiza una unión de perfiles óptima en posicionado y transmisión de fuerza. De uso en perfiles con canal de 10 mm. No necesita mecanización.

**Application**

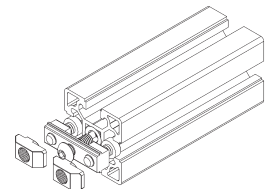
Guarantees an optimum connection of profiles in terms of positioning and force transmission. Profiles need no machining.



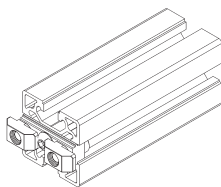
**Paso 1**  
 Insertar y enroscar el casquillo con ayuda de una llave allen



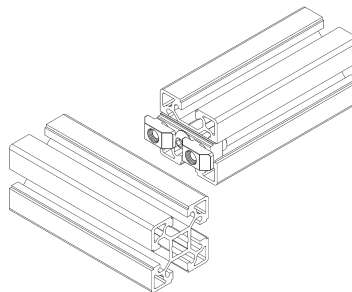
**Paso 2**  
 Comprobar que está introducido en su totalidad



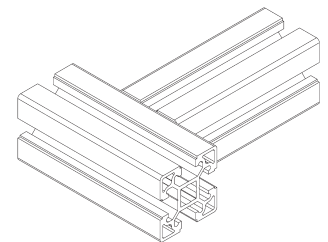
**Paso 3**  
 Colocar la brida y fijarla atornillando el tornillo ISO. Colocar las dos tuercas cabeza de martillo con sus tornillos DIN



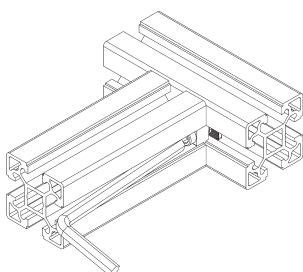
**Paso 4**  
 Comprobar que la brida está atornillada a tope



**Paso 5**  
 Colocar el perfil que se desea unir en posición



**Paso 6**  
 Juntar los perfiles introduciendo la fijación ajustable en el canal del perfil a unir.



**Paso 7**  
 Apretar los dos tornillos DIN, de manera que hagan girar las tuercas cabeza de martillo y aseguren la unión de los perfiles